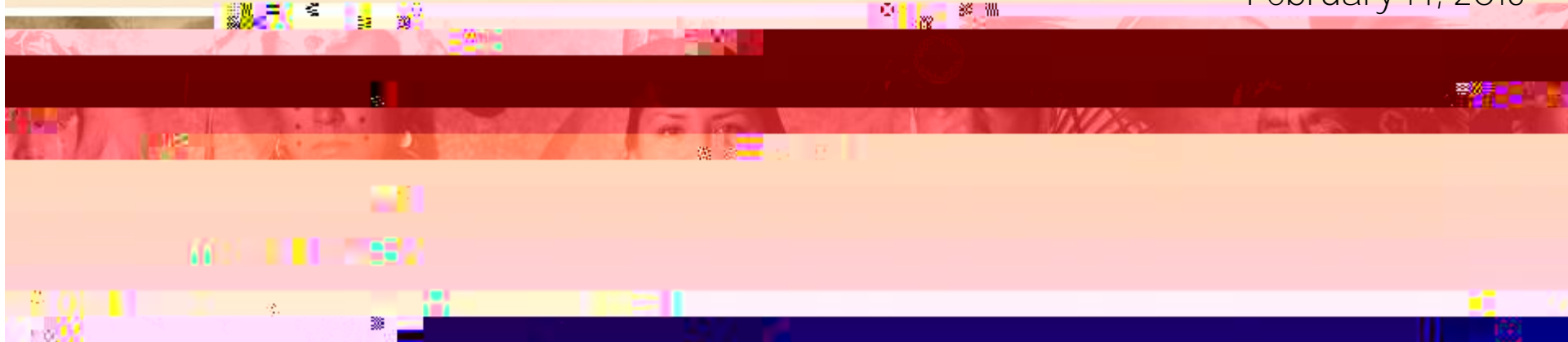




# Exploring Qualitative Interviewing and Analysis Techniques to Yield Deep and Nuanced Findings

Nancy M. Lucero, Ph.D., LCSW  
CRCF Research Seminar  
McGill University  
February 14, 2018



# This Journey

- How do tribal child welfare programs incorporate culture into their approach and service delivery?
- Findings that emerged were often superficial or incomplete
  - ... and different from what I observed in the field*
- Were our qualitative data collection & analysis processes capable of capturing the subtleties of culture?
- Revisited studies through a meta & synthesizing lens

# This Journey

- Within their narratives and for most interview questions, interviewees were actually sharing ways they incorporate culture.
- For these individuals, culture was inherent and integrated.
- Identifying expressions of culture required us to look in different ways and in different places.

We'll talk a little today about o to



# Findings

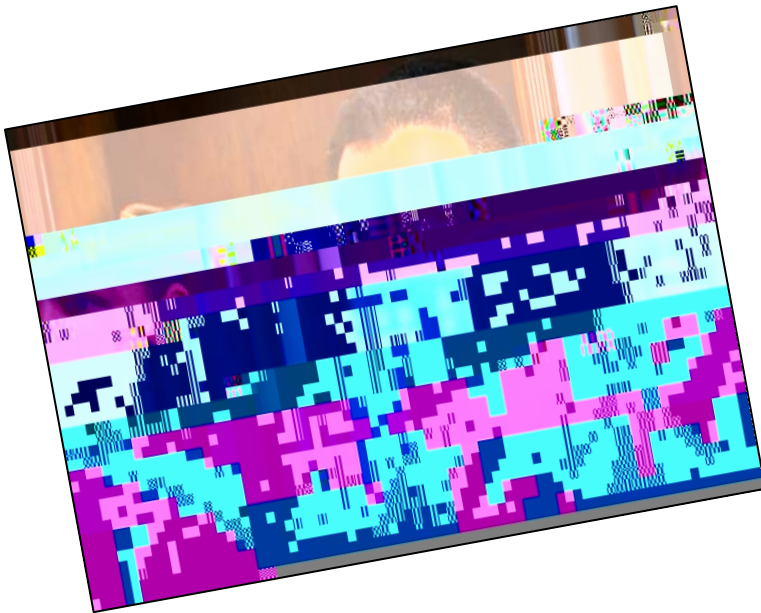
## **TRIBAL CHILD WELFARE** Practice Framework





# Qualitative Data Collection Interviewing and Observing

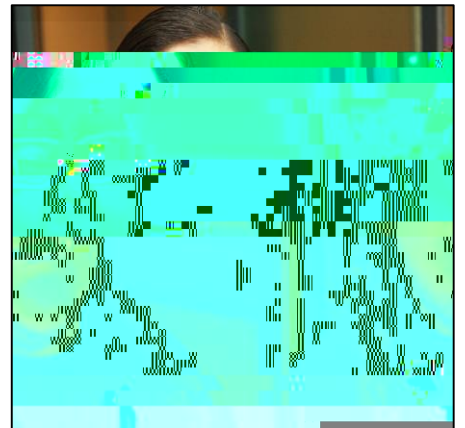
- Trusting yourself as a researcher to be able to go with the interview encounter
- Grounding yourself in the context and subject area
- Combining observation with interviews whenever possible





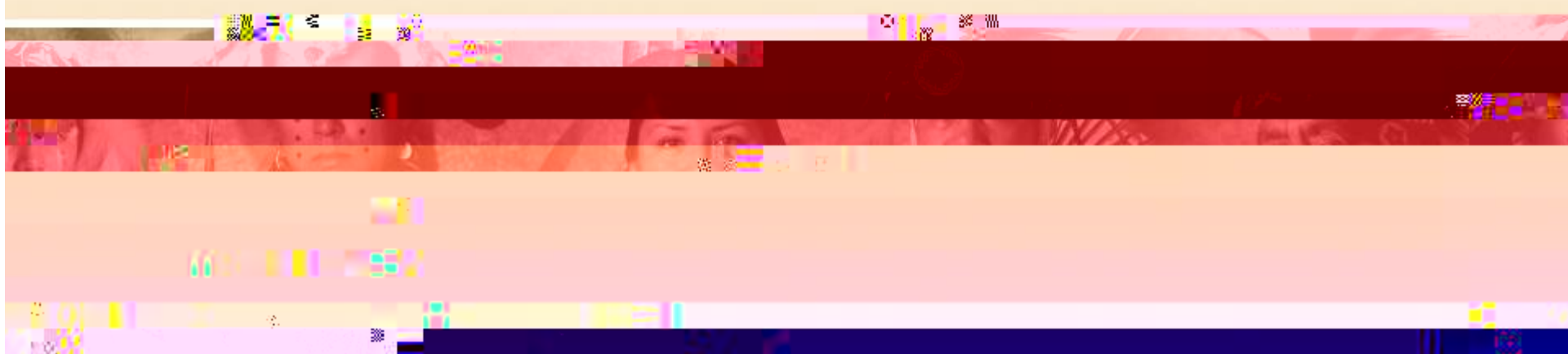
# Qualitative Data Analysis

- Fracturing your data less
- Do you see meaning better from the whole or the parts?
- Moving away from 1-2 word themes to “findings statements”





# Time for Discussion and Learning Together



# Contact Information

Nancy M. Lucero, Ph.D., LCSW  
Research Associate Professor  
University of Denver  
Graduate School of Social Work

Director of Evaluation  
Capacity Building Center for Tribes  
Butler Institute for Families

1248 S. High St.  
Denver, CO 80208

[nancy.lucero@du.edu](mailto:nancy.lucero@du.edu)  
720-201-2000 (c)

